

## Identifying the UN/ECE Compliance Plate

DATE OF MFR. (BUILT):		6-97	MDH: 061907		
VIN:		1C4GHB4RBVU149464			
E4	21	0195002	E11	13	063098
	26	0195001		14	030169
E6	10	010035	E13	17	040212
	11	020011		39	00155
	18	010010		44	0244038
	46	010019		51	011082
E11	85	000044		64	000029
	28	010016		79	00155
	12	030263		48	015003

### The Plate Must Contain the Following Information:

Vehicle VIN Number

Table in this format listing the UN/ECE Regulations that the vehicle has been certified to, the approval numbers relating to these certifications, and the UN/ECE Standards Marks

Sample Plate Only

## Explanation of Table

E11	13	063098
	14	030169

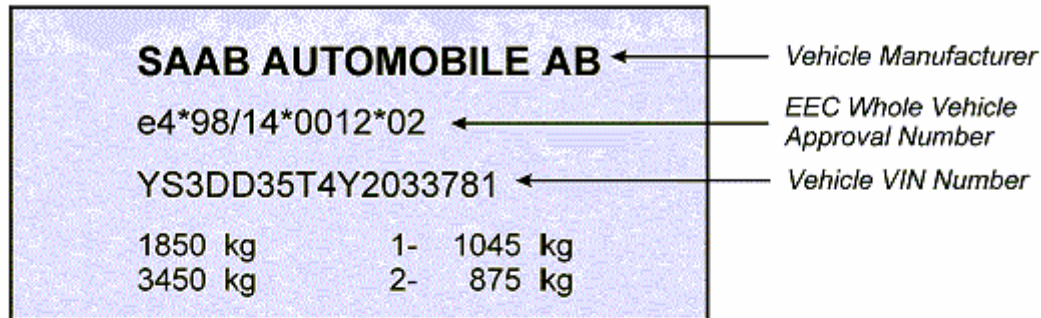
Approval Number. This number relates to the certification of the component or system to the UN/ECE regulation listed to the right.

The number of the UN/ECE Regulation to which the vehicle has been certified (e.g. '13' means that the vehicle has been certified to UN/ECE Regulation 13).

United Nations Economic Commission for Europe (UNECE) Standards Mark. This consists of an upper case 'E' followed by a one or two digit number.

## Identifying the EEC Whole Vehicle Approval Plate

**The Plate Must Contain the Following Information:**



*Sample Plate only*

## The EEC Whole Vehicle Approval Number

**e4\*98/14\*0012\*02**

